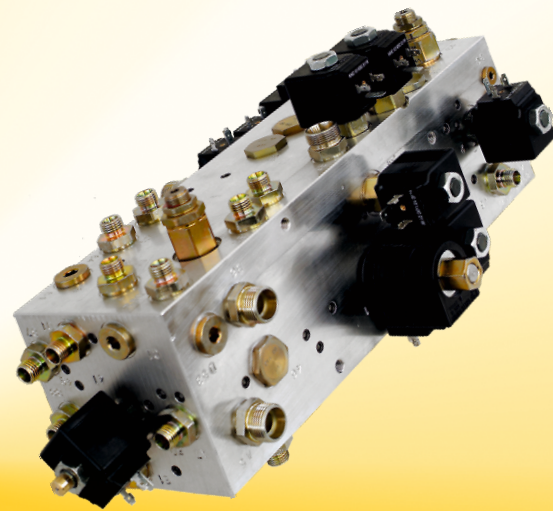
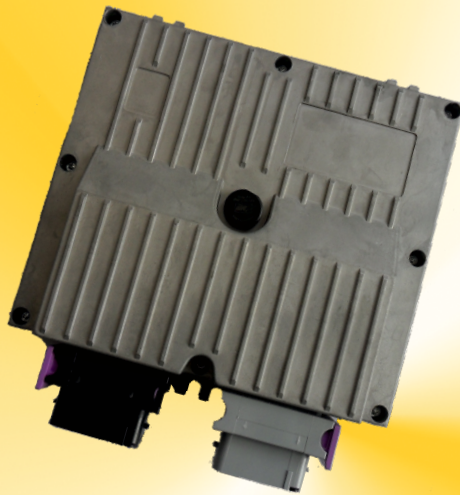




POWER-HYDRAULIK



- Customer specific design
- Matched to your system
- Designed for mobile applications

ELECTRONIC

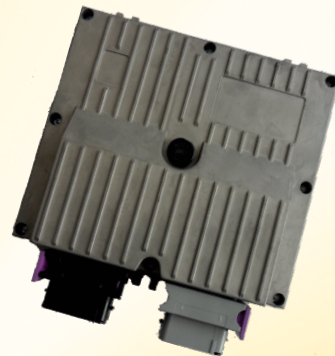
JHM Joystick

- Hall Effect Sensors
- CAN-Bus control
- Ergonomic handle design
- Up to 5 proportional axes
- Up to 9 on/off push buttons
- Customer specific mounted design
- Protection class up to IP67



Programmable Electronic

- Customer specific programming available
- CAN-Bus control
- Robust enclosure
- Power supply 8-32Vdc
- Analog inputs 10Bit / 16Bit
- PWM output with current feedback
- Parameters can be adjusted by the customer



Display

- Diagnostic / configuration unit
- CAN-Bus control
- Power supply 8-32 Vdc
- Protection class IP65



Controls

- Customer specific control with individual equipment and labeling
- Standard housing
- Harness included with control
- Protection class IP65 / IP67

